

North West

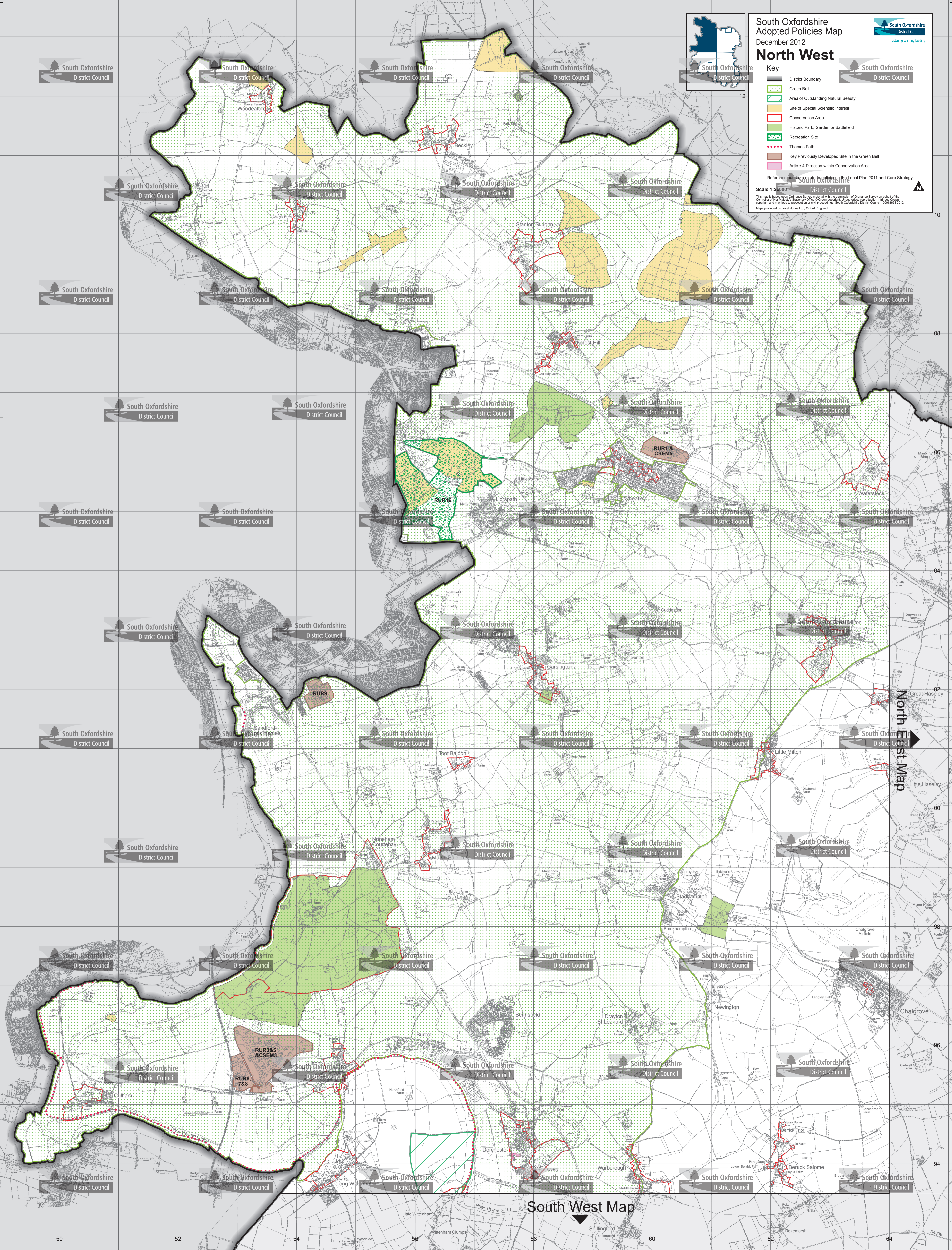
Key

- District Boundary
- Green Belt
- Area of Outstanding Natural Beauty
- Site of Special Scientific Interest
- Conservation Area
- Historic Park, Garden or Battlefield
- Recreation Site
- Thames Path
- Key Previously Developed Site in the Green Belt
- Article 4 Direction within Conservation Area

Reference numbers relate to policies in the Local Plan 2011 and Core Strategy

Scale 1:25,000

This map is based upon Ordnance Survey material with the permission of Ordnance Survey on behalf of the Controller of Her Majesty's Stationery Office. © Crown copyright. Unauthorised reproduction of this map is prohibited. South Oxfordshire District Council 10001602 2012
Maps produced by Lovell Johns Ltd, Oxford, England



North East Map

South West Map